



Active ingredient: Propamocarb Hydrochloride

THERE'S AN EASIER WAY TO GOOD KARMA

You'd do anything to protect your turf from the devastating effects of *Pythium*, but it's really not that complicated. Treat your turf early and be rewarded later. That's the power of Karma™. This highly systemic fungicide delivers maximum returns when used as a preventative in early spring, but it can also be used as a curative treatment in the summer. A multi-site mode of action also makes it an excellent resistance management tool.

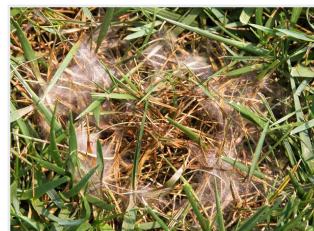
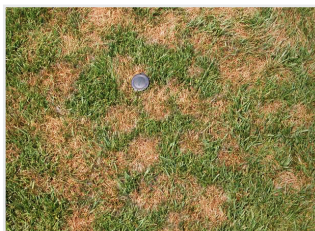
THE TRUE PATH TO PYTHIUM-FREE TURF

- » Prevents and cures many *Pythium* diseases, including damping-off, cottony blight, grease spot and root rot
- » Highly systemic for quick absorption and translocation
- » Multi-site mode of action prevents resistance problems
- » Can be applied following germination or to established turf
- » Suitable for tank-mixing to broaden disease-control spectrum
- » Prevents root rot and damping-off caused by *Pythium* spp. and *Phytophthora* spp. at all stages of ornamental propagation



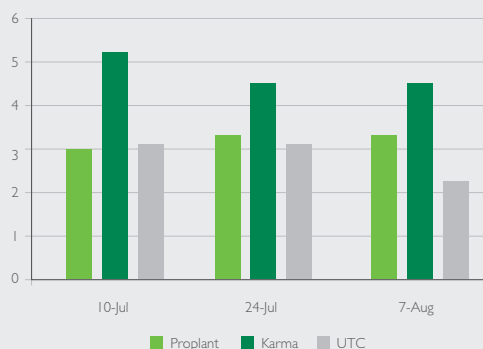
PYTHIUM DISEASES CONTROLLED

- » Cottony blight
- » Damping-off
- » Grease spot
- » Root rot



RUTGERS UNIVERSITY

Summer 2020 Pythium Trial (Curative)

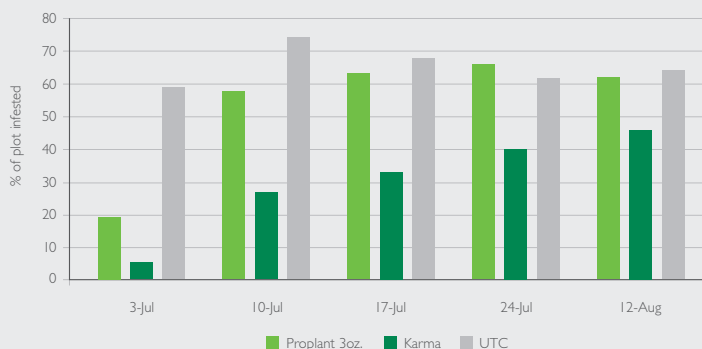


Stellar GLR Perennial Ryegrass stand. Newly seeded 5/28/20

Application Timings: First Application June 19th
Second Application July 3rd Third Application July 17th

RUTGERS UNIVERSITY

Summer 2020 Pythium Trial (Curative)



Stellar GLR Perennial Ryegrass stand. Newly seeded 5/28/20

Application Timings: First Application June 19th Second Application July 3rd
Third Application July 17th

TIMING AND USE RATES

CROP	APPLICATION RATE FLUID OUNCES PER 1000 SQ. FT. (LBS AI PER ACRE)	LIQUID EXTRACTION
TURFGRASS: For control of Pythium Blight, Pythium Damping-Off and Root Rot on Established Turf and Overseeded Areas	Preventative Treatment: 1.3 - 2 fl. oz. (0.062 - 0.095 lbs. ai) in 2 - 5 gallons of water	ESTABLISHED TURF*: Apply as a preventive treatment during periods of high temperature and humidity favorable to the development of Pythium Blight.
	Curative Treatment: 3 - 4 fl. oz. (0.14 - 0.19 lbs. ai) in 2 - 5 gallons of water	OVERSEEDED AREAS*: Apply after germination to control Pythium Damping-Off. RETREATMENT: Retreat at 7 - 21-day intervals if conditions remain favorable for disease development. Use the lower rate for the shorter interval and the higher rate for the longer interval within the application rate range. Under severe disease pressure conditions, use the highest labeled rate and shortest interval.

*Not for use on sod farms in Arizona



SIPCAM AGRO
USA

For more information about Karma, talk to your Sipcam Agro distributor or visit sipcamagrousa.com.

©2021 Sipcam Agro USA, Inc. Karma is a trademark of Sipcam Agro USA, Inc. Always read and follow label directions.