



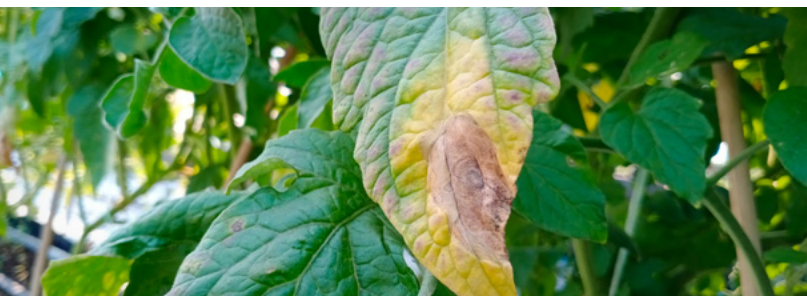
Active ingredients: cymoxanil, chlorothalonil

THE SMART CHOICE FOR LATE BLIGHT AND EARLY BLIGHT CONTROL



Late blight and early blight do more than negatively impact your tomato yields and returns. Without proper management of these diseases, outbreaks can devastate an entire crop. While there are many steps in preventing and managing these diseases, the use of foliar fungicides like Cymbol™ Advance on a regular and continuing schedule is the only way to manage the disease in the field.

Cymbol Advance combines the unique resistance management benefits of chlorothalonil with the excellent preventative and curative activity of cymoxanil. The combination of these powerful modes of action gives tomato growers full-season, multi-level protection for their crop.



CYMBOL ADVANCE OVERVIEW

- » Locally systemic and contact activity, plus preventative and curative properties
- » Superior sporulation control reduces future cycles of disease
- » Multi-site, broad-spectrum chlorothalonil plus antisporegic cymoxanil offers exceptional fungicide resistance management
- » Economical price combined with outstanding disease control performance results in proven ROI

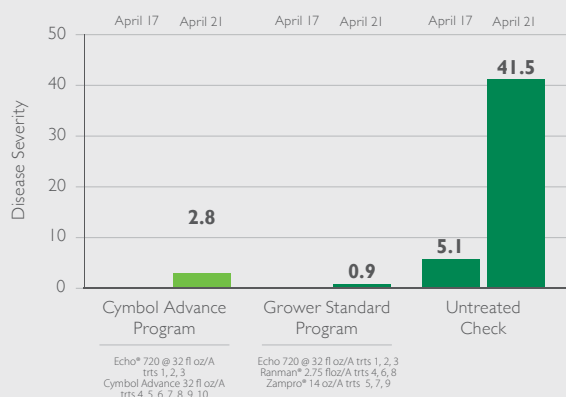
FIELD PROVEN

Cymbol Advance puts tomato growers in the driver's seat when it comes to interval frequency. Its flexibility allows growers the freedom to choose when to apply based on their circumstances and growing practices. Fields treated with the Cymbol Advance program are proven to provide comparable disease control and yields to those treated with the Grower Standard Program.

UNIVERSITY OF FLORIDA TOMATO LATE BLIGHT FUNGICIDE TRIAL

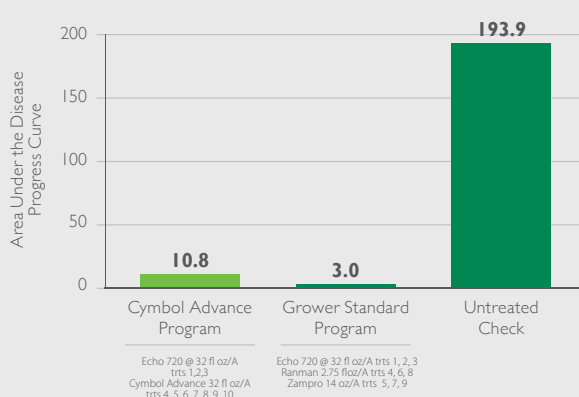
Disease Severity

Immokalee, FL 2017



Area Under the Disease Progress Curve

Immokalee, FL 2017



RECOMMENDED USE RATES

1.9 – 3.0 pints/A

- » Cymbol Advance also controls anthracnose and late blight diseases on tomatoes, potatoes and fruiting vegetables. See label for complete list of crops, diseases and rates.
- » Timing: Every 7 days or earlier before harvest.

PACKAGING

2 x 2.5 gallons per case, 260 gallon tote

FRAC CODE

27 (cymoxanil), M5 (chlorothalonil)



REASONS FOR EARLY SEASON APPLICATION

- » Secures control of the disease source, penetrating leaves to fight disease from within the plant
- » Manages and contains disease before it spreads to other plants
- » Stops unseen infection up to three days after initial infection
- » Offers the most economic approach to disease management, delivering the best ROI and peace of mind

Real People. Real Solutions. To learn more about Cymbol Advance or view our complete portfolio, talk to your Sipcam Agro distributor or visit sipcam.com.

SIPCAM AGRO USA, INC.

2525 Meridian Parkway, Suite 100 | Durham, NC 27713
sipcam.com | 800.295.0733

Always read and follow label directions. ©2021 Sipcam Agro USA, Inc. The Sipcam and Cymbol Advance logos are registered trademarks of Sipcam Agro USA, Inc. Echo 720 is registered product of Sipcam Agro USA, Inc. Ranman is registered product of FMC and Zapro is registered product of BASF.